



BOARD OF DIRECTORS

Anna Gould, *Founder & Board Chair*
 Albert Ragucci, *President*
 Pat Horan, *Treasurer*
 William Drapeau, *Secretary*

Nancy Cincotta, MSW, MPhil
 Andrew Eichenfield, MD
 Ralph Heckert
 Timothy Porta
 Mike Rotondo
 Dan Shaw
 Kevin J. Silverang, Esq.
 Joseph Tassone
 Michael Wisecup

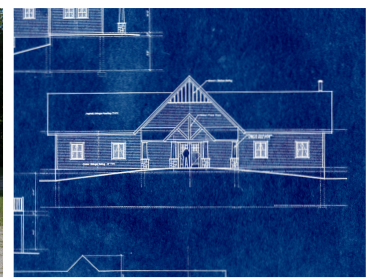
HONORARY MEMBERS

Bruce Chalmers
 Senator Susan Collins
 Governor Paul LePage
 Andrew Viterbi, PhD

IN MEMORIAM

Lawrence Gould, PhD, *Founder*
 David Frohnmayer, Esq.
 Marty Grossman
 David Hancock
 Joseph Pappalardo
 Erna Viterbi

IN THIS EDITION



Cutting ribbon on one new building, and breaking ground on another; successful outreach efforts; innovative giving options and fundraising stories; and experiences of family members and volunteers, in their own words.

FIND OUT MORE INSIDE!



Friends, family, business colleagues and even my wife have asked me of the challenges of working at Camp Sunshine. How do you do it? How hard it must be! Incredibly, it is quite to the contrary, it is more often a place filled with Joy, Hope and Inspiration. This is something that my wife has also come to realize and embrace as she spends more and more time onsite.

Sometimes there is cause to pause and reflect, when one has a firsthand view to the fragility of life. This knowledge comes with a greater understanding of how important and special each moment and experience at Camp Sunshine can be. For me, it is both a privilege and an honor to be able to observe and share precious moments with the amazing families that attend Camp and the generous volunteers that give of themselves.

Watching families arrive at Camp and enter through one of our three front doors you can see the stress and burdens that they have endured since their child has been diagnosed. It is visible in their face and body language. As the session progresses you begin to see these feelings reduced and the stress seems to melt away. Families can concentrate on being a family, friendships with other families develop, connections are made, resources are uncovered and everyone can take a deep breath. By week's end families and volunteers come together and collectively a supportive community is formed.

Parents often speak of how Camp is life-changing and in some instances life-saving. I believe it is the power of the extraordinary moments that take place that foster and create such a response. One cannot help but be uplifted by the courage of a small boy

setting his walker to the side and walking across the stage for his talent show act, or the young man that moves to center stage and leads the audience in his "Fight Song"! There are the glorious moments that take place behind the scenes, like Miss Maine escorting a camper to his high school prom or the time the Game Wardens of the show North Woods Law showed up to surprise a camper because they were his heroes and were welcomed with tears of joy. Memories are made each session and with them a bit more strength to carry on.

How do you do it? How hard it must be. These are happy times, inspiring times, they are times that give you goosebumps, yet fill your insides with the warmth of "Sunshine". Thank you to our kind and generous donors whose support allows us to create magical times.

Michael Katz

Executive Director

**FOLLOW US ON SOCIAL MEDIA
FOR UPDATES, PHOTOS, VIDEOS, AND MORE!**



GENEROSITY OF SPIRIT



As you can see from the picture above and throughout the other pages, there are smiles galore at Camp Sunshine!

People often ask me, “How can you continue to do this program, it must be so depressing?” How wrong they are! I continue to feel blessed each and every day that I have been so privileged to be part of such an amazing program that continues to bring so much happiness to each person who enters our “magical 3 doors”. What I see is what actually takes place in our special sessions, people smiling and encouraging each other. Parents and children support each other in ways you and I cannot truly understand, a touch of the hand, a smile, a nod, a nudge, listening, encouragement, sharing the moment, sharing a concern, and a million small things that evolve into monumental support.

I see children having the ability to be “children” with their ports, wheelchairs, oxygen, crutches, bald heads, chubby cheeks, funny hats and whatever it is that they are sporting. I see no one remarking of these things because here at Camp, they are normal. We have created a “normal world” that our unique families can come to for an infusion of fun they can share with each other, memories to take with them and hope that the future will be a bit brighter.

This would not be available to these special families if not for your continued generosity. Generosity of spirit when I look at

the room full of smiling and eager volunteers. They are at Camp simply to lend a hand or two in giving of themselves to all who need a helping hand. What an inspiration to see! Our multitude of gracious donors, who year after year send in financial support to enable us to continue to provide this free and much needed respite. The entire staff who work diligently year round to prepare and execute a wonderful program and of course our board, whose tireless involvement in overseeing the financial stability prepares us for a growing and prosperous future.

I leave you with something I just read from a Commander, US Navy Reserve, that touched me:

Honor the Past

Engage in the Present

Embolden the Future

We are indeed lucky to be living in this beautiful country of ours.

Anna Gould

Anna Tassone Gould

Founder, Board Chair

COMMITMENT & COMPASSION - tropical SMOOTHIE CAFE



What an amazing day early this August, at a session sponsored by Tropical Smoothie Cafe, when CEO Charles Watson, corporate team members, franchisees, area developers and employees were on hand to present Camp Sunshine with its largest corporate contribution to date - as well dedicate our new Sports Center.

As families and volunteers were being treated to Sunshine Smoothies, a smoothie developed by the national chain in honor of Camp Sunshine, they gathered for what would be a monumental moment in Camp's history.



Watson and representatives of the organization through fundraising efforts in 700 stores across the country presented a check for \$1,011,000.00! To date, Tropical Smoothie Cafes have now exceeded 6 million dollars in fundraising.

"Camp Sunshine does a tremendous job of helping families create lasting memories and building impactful relationships for the population it serves," said Tropical Smoothie Café CEO, Charles Watson. "Tropical Smoothie Café franchisees, team members and guests are excited to present Camp Sunshine with this historic check in our 11th year of fundraising for them."



The awestruck crowd then moved to the newly constructed 2800 sq. ft. Tropical Smoothie Cafe Sports Center for a ribbon cutting ceremony. Guests were then invited into the new space, which includes a central court that can be used for basketball, volleyball, scooter hockey, initiative games and archery. At one end of the court is a floor to ceiling climbing wall while the other end is home to a viewing area and fitness center.

Everyone at Camp Sunshine is humbled by Tropical Smoothie Cafe's support and honored by their continued commitment.

OUTREACH UPDATE



Word is out about Camp Sunshine! If you've been to Camp this year, you've seen it- more families with the "new family" sunshine on their nametags, Camp vans and busses on the move, and programs bustling with activity. Together with partner organizations, volunteers, and supporters like you, we're working hard to ensure that even more families can benefit from the opportunity for their "best week ever" at Camp Sunshine.

Building on last year's outreach efforts, we were pleased to establish several new partnerships in 2018. In April, we debuted a session dedicated for families from the Pediatric Transplant Center at Boston Children's Hospital with great success. In June, we organized a bus for families from the Children's Hospital of Philadelphia Pediatric Oncology program. This fall, we partnered with the hematology program at Boston Children's Hospital to coordinate a bus full of families for our September Sickle Cell session.

With several sessions remaining this year, we've already achieved our goal of reaching even more new families than last year. We're hearing great feedback from families and our referring partners. Thanks to your support, the impact of Camp Sunshine continues to grow.



A FAMILY STORY



My daughter was diagnosed with a brain tumor 10 years ago when she was 3 years old; my youngest daughter was just 1 year old at the time. An unpredictable, medically consumed lifestyle is their "normal" childhood experience. Treatment protocols last years, followed by enough time off treatment to start picking up the pieces, but then the tumor begins growing... and we begin another more intense treatment regimen. My daughter just turned 13 years old and we are searching for treatment options that remain as her tumor continues to grow. The options available are growing exhausted. Although we live in a medical community and have many connections to childhood cancer organizations in our area, we had no connections to other families with this specific diagnosis, and that changed everything.

We found Camp Sunshine to be the light we needed at this dark point in our lives. It's a light I haven't found anywhere else. As a parent, I sat with other adults and felt truly understood for the first time in 10 years. We speak the same language and tuck burdens in our pocket everyday as we face the challenges. I didn't have to pretend. We stood in solidarity with hearts that understand the same brokenness. Ironically, despite heavy heartbreak, somehow Camp Sunshine breeds HOPE. I grew deep seeded friendships, we shared resources, ideas, experiences, and medical connections. I learned that I am not alone in this journey.

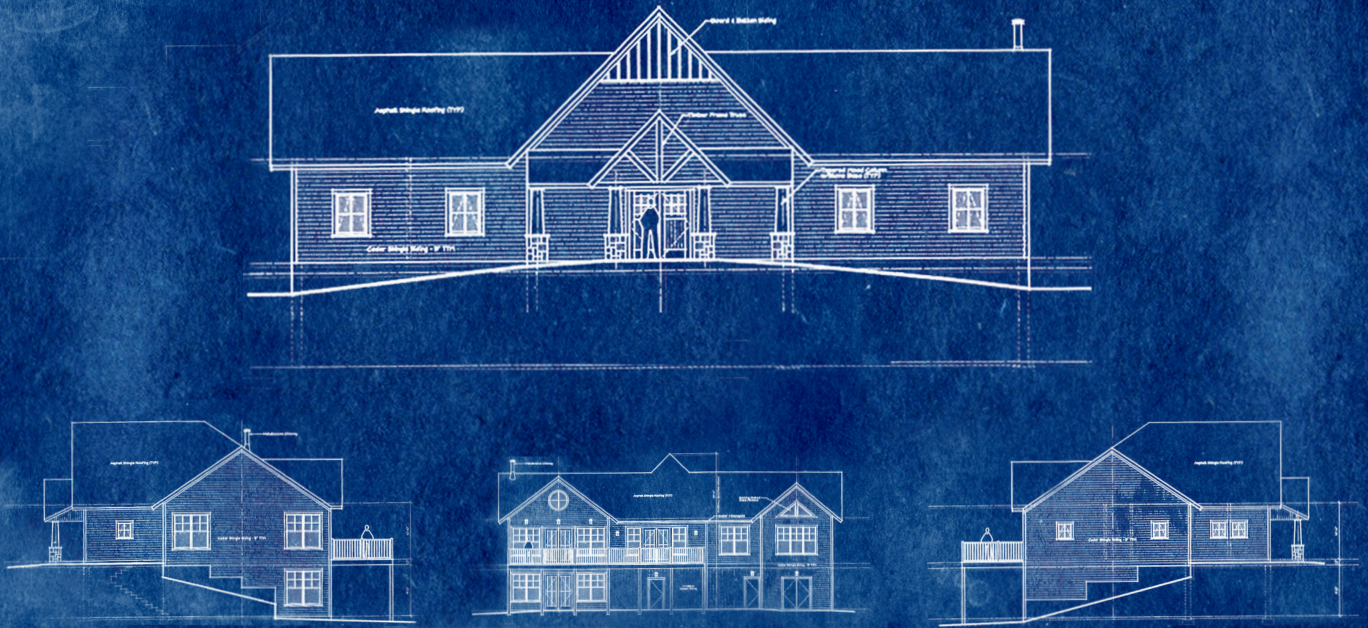
Bigger than what I received is what my 2 children received from Camp Sunshine. I've never seen so many smiling, welcoming, energetic, and engaged volunteers in my life! My girls (whom I always need to wake) would set early alarms and push me out the door to be with their new friends. They met other kids who also live this complicated childhood, and they relished in it! My girls surprisingly grew more curious about brain tumors which prompted amazing conversations. This curiosity replaced anger and resentment they'd previously approached it with. It opened their eyes and their hearts to a world that understood them. Of course this came alongside endless summer fun that the amazing property provided.

Your financial donation made a deep impact on our lives. I'm forever grateful that you were willing to sponsor a stranger for this life-changing experience. We felt loved, cared for supported and empowered in a way I've never experienced. Camp Sunshine sent us away filled with strength and hope to begin the battle once again.

With deepest gratitude,

Heather, Ana and Elsa

THE NEW CLUBHOUSE BUILDING PROJECT



Camp Sunshine is pleased to introduce plans for the newest addition to our campus. The Family Clubhouse, which is scheduled to open in 2019, will be a brilliantly thought out and designed space overlooking our waterfront area and beautiful Sebago Lake. It will be a place where families can play board games, parents can relax and groups can gather for discussions and entertainment. Upon its completion, it is certain to become a keystone of the campus.

Camp Sunshine has always expanded to meet the needs, and often times the suggestions of our attending families, and the just under 5,000 sq. ft. Family Clubhouse will be no exception to that tradition.

Facing the lake, the Family Clubhouse will feature a large deck and patio with Adirondack chairs and other outdoor furnishings as well as our “stargazing area”. The idea of which was sparked when one of our attending doctors, who would bring his own telescope, shared the wonder by which the stars could be viewed in Maine.

The first floor will be designed to serve as a “walk-out” to our beachfront and marina. It will be home to the aquatics center, locker rooms, and a multi-purpose room. The space will be ideal for bringing groups of 30-40 campers together for a myriad of events. The lakefront patio will be a relaxing place for parents and families alike to watch as campers canoe, paddleboard, or kayak on Sebago Lake.

The second floor, which will be the main entrance on the front of the building will also be home to some much-needed and incredibly special spaces. To the right of the entryway, a great room will have the feel of a true Maine lodge with exposed woodwork, plank walls, and a stone hearth and fireplace. Rustic and vibrant colored furnishings will accent the room while books and board games on shelves will provide the tools for families to relax and decompress.

Off the great room will be our adult game room, a place where moms and dads can challenge one another to a game of pool, foomball, or perhaps play some card games. We are pleased to be able to offer this space to adults who typically need to wait their turn at one of the three kids’ game rooms on campus.



MANY THANKS TO

PartyCity

\$170,000
MULTIPURPOSE
ROOM

**HARVARD/
BOLTON, MA
ENDOWMENT**

\$100,000
LIFESTYLE
WING



\$100,000
GREAT
ROOM

Omaze

\$90,000
CLUBHOUSE
DECK



\$75,000
ADULT GAME
ROOM



\$75,000
SERENITY
ROOM

**KEZER
FAMILY**

\$15,000
LAKEFRONT
PATIO

To the left of the entryway will be our “Lifestyle Wing” comprised of four additional rooms each designed with the needs and offerings sometimes provided to our families. The Serenity Room will serve as a nondenominational area for healing, worship, and reflection. The three additional rooms will serve as spaces for the many generous volunteers who offer their incredible talents and services to families when they are able to visit Camp. These services may include massage and reiki therapists, or even hairstylists who are happy to do their part to help families relax.

As you can see, we have been blessed with the generosity of many donors already, but opportunities still exist for you to have a permanent place at Camp Sunshine. We hope some of you will consider a gift to help underwrite the remaining naming opportunities. Commitments to our capital campaign can be fulfilled over a 1-3 year period. To give your support, please contact the Development Office at 207.655.3800.



NAMING OPPORTUNITIES

Building	\$800,000.00
Multipurpose Room [SOLD]	\$170,000.00
Lifestyle Wing [SOLD]	\$100,000.00
Great Room - Upstairs [SOLD]	\$100,000.00
Clubhouse Deck [SOLD]	\$90,000.00
Adult Game Room [SOLD]	\$75,000.00
Serenity Room/Chapel [SOLD]	\$75,000.00
Wellness Room 1	\$25,000.00
Wellness Room 2	\$25,000.00
Wellness Room 3	\$25,000.00
Aquatics Room	\$25,000.00
Locker Room	\$25,000.00
Locker Room	\$25,000.00
Foyer	\$25,000.00
Fireplace	\$15,000.00
Lakefront Patio [SOLD]	\$15,000.00
Aquatics Furnishings	\$25,000.00
Great Room Furnishings	\$25,000.00
Adult Game Room Furnishings	\$25,000.00
Multipurpose Room Furnishings	\$20,000.00
Serenity Room Furnishings	\$15,000.00
Lakefront Deck Furnishings	\$15,000.00

PLANNED GIVING



Camp Sunshine is pleased to share our Forever Fund Giving Guide. We will begin mailing the guide to potential volunteers and donors beginning this winter as well as provide the information on our website. The guide is designed to help start discussions regarding planned giving options and share stories of those who have already made long-term commitments to Camp Sunshine.

There are many different ways to prepare a planned gift with advantages both during one's lifetime or as part of a living will. It is estimated that nearly two thirds of Americans do not have a living will. Our goal is to explain, in simple terms, how these options can benefit you, your family, and Camp Sunshine.

This resource will outline gift asset options that you may elect to integrate in your financial goals. Your gift will have a lasting impact on a nationally recognized program that serves and supports a much-needed and underserved population - free of charge.

We invite you to read, learn, discuss, and consider including Camp Sunshine in your plans, but we acknowledge that these decisions about your estate are difficult, significant and enduring. We will always recommend outside consultation and discussions with your loved ones.

Planned giving is a great opportunity to ensure Camp's future. Leaving a personal legacy helps provide hope and joy to the many families and children with life-threatening illnesses who we serve every year. For more information or to be sure you receive the guide, contact the Camp Sunshine office at (207) 655-3800.

THE FOREVER FUND

Camp Sunshine's Forever Fund offers special recognition to those generous individuals who choose to include Camp in their wills and through other types of planned giving. These gifts allow Camp Sunshine to build its Endowment Fund and solidify its base for the future. Recognition of estate gifts in the Forever Fund is not reserved for those who have passed away. In fact, we welcome the opportunity to recognize and thank donors during their lifetimes. If you have included Camp Sunshine in your estate planning, please let us know.



Estate of Katherine Derrig - **\$414,000**

Estate of Harold Asbury - **\$100,000**

Estate of Elizabeth and Nat Saltonstall - **\$100,000**

Kelso Fund (Gift Annuities) - **\$75,000**

Estate of Shelton Brooks - **\$74,000**

Estate of Clayton Belyea - **\$60,000**

Welch Family Trust - **\$57,000**

The Rebecca Reap Fund - **\$50,000**

Estate of Joseph Alfred Libbey - **\$46,000**

R. Milton Gray (Gift Annuity) - **\$25,000**

Eleanor Sanders - **\$24,000**

Wendy Klodt Revocable Trust - **\$21,250**

SALUTING COMMANDER WISECUP



Camp Sunshine welcomes new board member, retired U.S. Navy Commander and founder of the SEALs for Sunshine fundraiser, Michael Wisecup. Since 2014, SEALs for Sunshine events have raised over \$500,000 to send military families who have children with life-threatening illnesses to Camp Sunshine. Commander Mike has been instrumental in these events, which have now taken place on both the east and west coasts. Starting with a 13-mile swim across Sebago Lake in 2014, the events have only become more physically strenuous. This year's event including a 3-mile, open-ocean swim, 60-mile bike ride, and 10K run on the east coast, and a 26.2-mile stand-up paddleboard marathon paddle on the west coast.

As Wisecup mentioned at the 2018 Stone Coast Challenge Landing Party at Fort Williams Park in Cape Elizabeth, Maine, "We try to create these events to bring some kind of connection to what Camp families go through... we deliberately make them as hard as possible - this year's guys and gals are in incredible shape, and I think it was tough for most of them... but the purpose

is to do it together as a team, to finish as a team, just like Camp Sunshine families go through treatment together as a team, post-treatment together as a team." He later added, "Camp Sunshine is one of those few places in the world that just gives you energy." Wisecup then acknowledged the Camp Sunshine families in the audience who had come to see his team finish the challenge, and all that they had been through on their journeys.

With a good sense of what military families face, Commander Wisecup is committed to ensuring that military families with children with cancer and other illnesses can attend Camp Sunshine in perpetuity, free of charge, and find respite from the dual stresses of childhood illness and life with a parent who is or has been on active duty. In 2018, Wisecup was elected as a member of Camp Sunshine's board of directors, and is returning to Maine after an honorable service career with the U.S. Navy. Camp Sunshine wishes Commander Mike all the best on his transition, and know that he will be an enormous asset to Camp Sunshine in the years to come.



AWARDS & RECOGNITION



RED SOX FOUNDATION
HONORED CAMP SUNSHINE
WITH IMPACT AWARD



SHARON DUBE
HONORED WITH
GOVERNOR'S VOLUNTEER
OF THE YEAR AWARD



**AMERICAN CAMP
ASSOCIATION**



COCA-I
HONORED FOR SAFE AND
EFFECTIVE ONCOLOGY
CAMP PROGRAMMING



GREAT NON-PROFITS
HONORED AS TOP RATED
CHARITY BY THOSE WE
SUPPORT AND SERVE

VOLUNTEER PERSPECTIVES



KIM MCCULLEN

Back in 2011, I first walked through Camp Sunshine's three yellow doors, selected to go with a group from my high school, with no idea of how my life was about to be forever changed. While it is hard to imagine a time when Camp was not a part of my life, I do remember

being unsure of what to expect at my first session, and was completely unaware - yet forever grateful - about the life-long impact Camp was about to make.

Witnessing 40 families with diverse backgrounds come together from near and far unite and have instant understanding of what one another is going through, is an indescribable experience to witness, and no matter how many sessions I go to, the awe I have only continues to deepen. Simply, Camp is home. It's the best place you'd never want your family to have the reason to attend, but when you do, you're met with comfort, support, and love. While there may be moments of sadness or grief, Camp is one of the happiest places I've ever been, filled with laughter from kids, parents, and volunteers alike. It is a privilege to have my "sunshine family" filled with forever friends. Camp has not only given me a greater, more appreciative perspective on all aspects of my life, but has inspired me to pursue my Master's in Nonprofit Management.

The magic of Camp is both lasting and addictive, and after my first time there, as soon as I turned 18, I have signed up as much as I possibly could, and had my mom join me as well. Watching the evolution of the beautiful campus, programming, and of course the families, is a privilege I hope to have throughout the rest of my life.



GUY BOUCHARD

I first volunteered at Camp Sunshine about 15 years ago after leaving my 18-year leadership role in the Boy Scouts. A handful of leaders used to take a group of Boy Scouts camping for a week at nearby Camp Hines. One of the leaders, Deb Waterhouse, had spent a week at Camp Sunshine and told me about her wonderful experience. After leaving the BSA I was looking to fill that gap. So, I gave Camp Sunshine a try for a weekend and fell in love with the place. It is a place that does so much for the children and the families.

I have had the pleasure of meeting some of the strongest people I have ever met with some of the most heart-breaking journeys one could endure. As a volunteer on the waterfront I have had the pleasure of meeting and friending most all the families in camp. I always say, "When the families come down to play at the waterfront we are creating memories for them, let's make them some of the best memories they can have". So, my wonderful job is to make the waterfront a happy place for all. My experience as a Camp Sunshine volunteer has helped me appreciate all the wonderful things in my life and makes me stronger when life throws you a zinger. Thank you, Camp Sunshine, for allowing me to be part of the lasting memories.

CHARITY NAVIGATOR



Charity Navigator has again awarded Camp Sunshine its highest 4-star rating, showcasing Camp's overall financial responsibility, expediency, and transparency.

FUNDRAISING STORIES

ART FROM THE HEART How does one begin to explain an event like Art From the Heart? Well, we can begin by taking one man's vision and dream to help those in need, then add a plethora of extremely talented friends, a very patient and understanding partner, and cap it off with incredibly giving community ... and you'd be about halfway there.

Because if you're Steven Riley you would also need to build a barn on your property with the intention of creating your own playhouse for 100 guests, add sets, sound, and lighting to rival any

theater, create handmade costumes, write your own musical and of course perform in the annual show itself. That's right your own Broadway Theater! Steve and his friends put on a performance like no other. Each show is filled with a playful kind-hearted spirit, laughter and sometimes tears. For the past several years Camp Sunshine has been the beneficiary of this extraordinary event. At the conclusion of this year's show, Art from the Heart reached \$100,000 in support for children with life-threatening illnesses and their families at Camp Sunshine!



A heartfelt thanks goes out Steve, David, their family members and friends who make this event so amazing and successful.



FOLEY GOLF TOURNAMENT In February, brothers Brian, Michael and Bill Foley reached out to Camp Sunshine after the passing of their sibling Christopher at the age of 43. Their goal was to create an event that would bring together family, friends, and co-workers to help celebrate his life.

As a beloved family man and owner of a local business in Worcester, MA the outpouring of support was overwhelming. Actually, by the time we were contacted much of the golf outing had already been sold out and it was just a matter of selecting a charity that would be a solid reflection of his life. It turns out Chris had a certain relationship with Camp

Sunshine that made the family's decision that much easier. As a graduate of Holy Name Central Catholic High School, the single longest school group volunteering at Camp Sunshine, he had actually served as a student volunteer 25 years earlier.

The lasting impact that experience had on Chris's life and his ability to always "light up a room" seemed a natural match for Camp's ability to provide families with just a bit of .. time away .. from their own journey's.

Needless to say, the 1st Annual Christopher Foley Golf Tournament was a huge success not only raising \$35,000 but helping build the foundation for the legacy of an amazing man!

L-A HARLEY BIKE RIDE On August 11th, while a portion of the staff was tending to our Watermelon Festival at L.L. Bean, Executive Director, Mike Katz was hanging out with our friends at L-A Harley-Davidson. Mike saw the group off in the morning from their store in Lewiston and would rejoin them for the conclusion of their ride to Sugarloaf Mountain in Carrabassett Valley, Maine.

The store's owner, John Story, has been a dear friend and huge supporter of Camp Sunshine going back to 2008. The ride has always been popular among the shops patrons and on occasion has even had a stop at Camp Sunshine.

This year nearly 200 riders and hundreds of other guests were on hand at the end of the ride and to help celebrate the day. "I couldn't get over how much I was both embraced by the community and how compassionate they are about Camp Sunshine and the families we serve - it was an amazing day!" said Katz.

This year's event was the biggest ever raising \$19,000. In part thanks to the additional support of Stoney's Memorial Run which raised more than \$5,500 as part of their annual ride. To date, L-A Harley Davidson has raised in excess of \$75,000 for Camp Sunshine.





35 Acadia Road
Casco, ME 04015



CAMP SUNSHINE HAS SERVED

51,500 

FAMILY MEMBERS SINCE 1984

CAMP SUNSHINE'S PROGRAM
IS MADE POSSIBLE BY



10,000 CONTRIBUTING DONORS LIKE YOU

AND HAS BEEN RECOGNIZED BY



CAMP SUNSHINE RUNS
23 SESSIONS
PER YEAR



IN ALL FOUR SEASONS

DO YOU KNOW A FAMILY
WITH A CHILD WHO HAS
BEEN DIAGNOSED WITH A
LIFE-THREATENING ILLNESS?
PLEASE CONSIDER TELLING THEM
ABOUT CAMP SUNSHINE!

FIND OUT MORE AT

WWW.CAMPSUNSHINE.ORG

35 ACADIA RD. CASCO, ME 04015 · 207-655-3800